

PHYSICAL SETTING EARTH SCIENCE

Tuesday, June 19, 2007 — 9:15 a.m. to 12:15 p.m., only

ANSWER BOOKLET

Male

Student..... Sex: Female

Teacher

School..... Grade

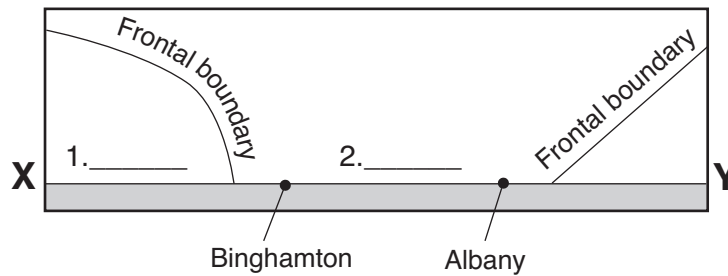
Answer all questions in Part B-2 and Part C. Record your answers in this booklet.

<input type="text"/>		Performance Test Score (Maximum Score: 23)
.....		
Part	Maximum Score	Student's Score
A	35	
B-1	15	
B-2	14	
C	21	
Total Written Test Score (Maximum Raw Score: 85)		<input type="text"/>
Final Score (from conversion chart)		<input type="text"/>
Raters' Initials:		
Rater 1 Rater 2		

Part B-2

For Raters Only

51



51

52 _____

52

53 _____

53

54 _____ Period

54

55 (1) _____

55

(2) _____

56 _____

56

**For Raters
Only**

57 _____

57

58 _____

58

59 _____

59

60 _____

60

61 _____

61

62 _____

62

63 _____ and _____

63

64 Mineral: _____

64

Use: _____

**Total Score for
Part B-2**

Part C

65 July _____

65

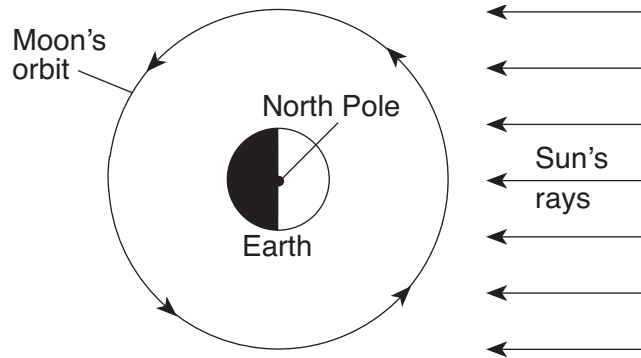
66 _____

66

67 August _____

67

68



68

69 _____

69

For Raters Only

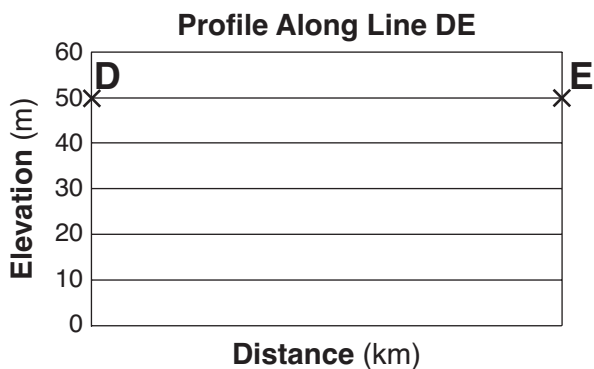
70 _____ m

70

71 Gradient = _____

71

72



72

73 _____

73

74 Magnitude: _____

74

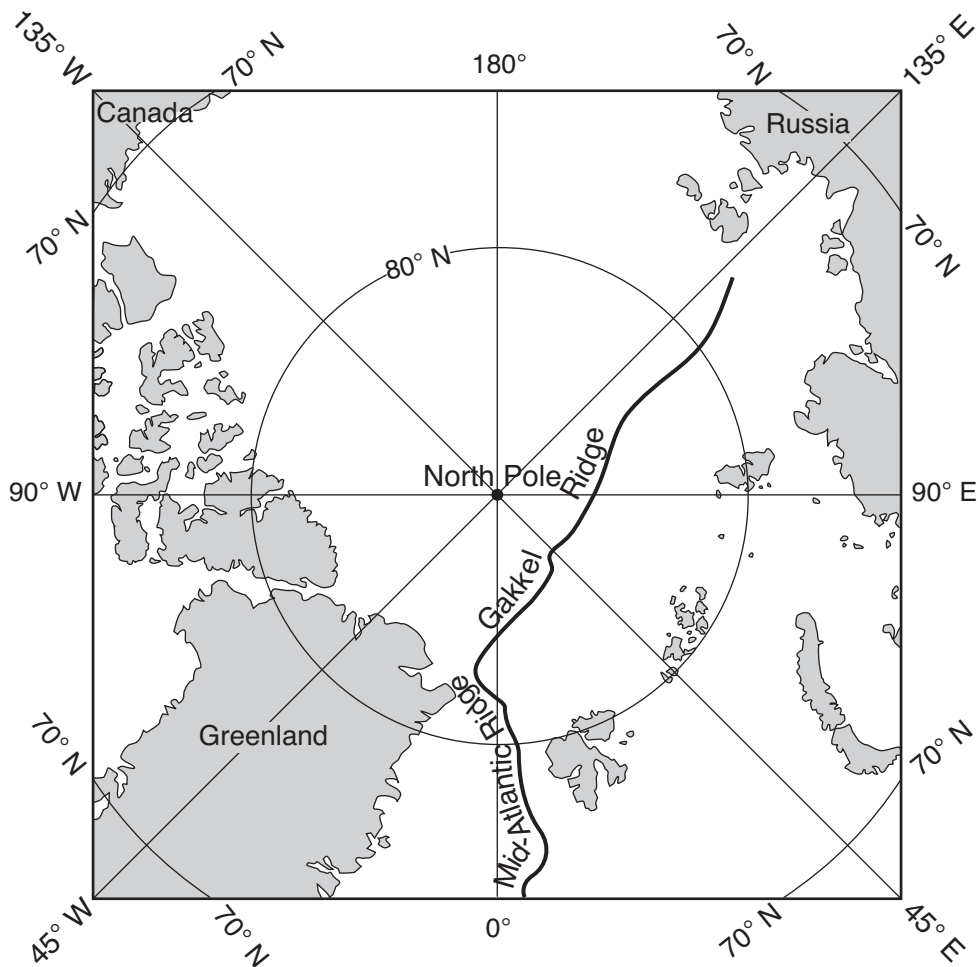
75 _____

75

76 _____ minutes _____ seconds

76

77



77

78 _____

78

79 _____ Plate and _____ Plate

79

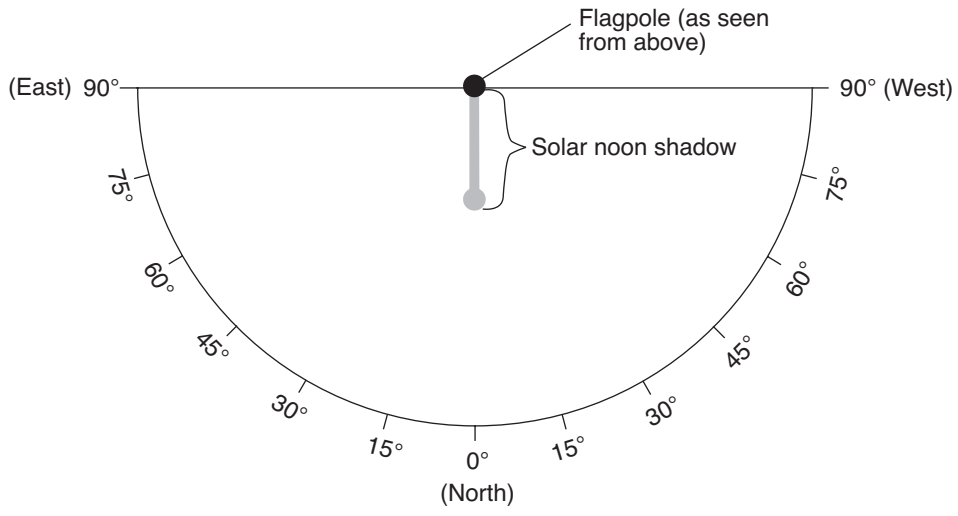
80 _____

80

81 _____ and _____

81

82



For Raters Only

82

Total Score for Part C

