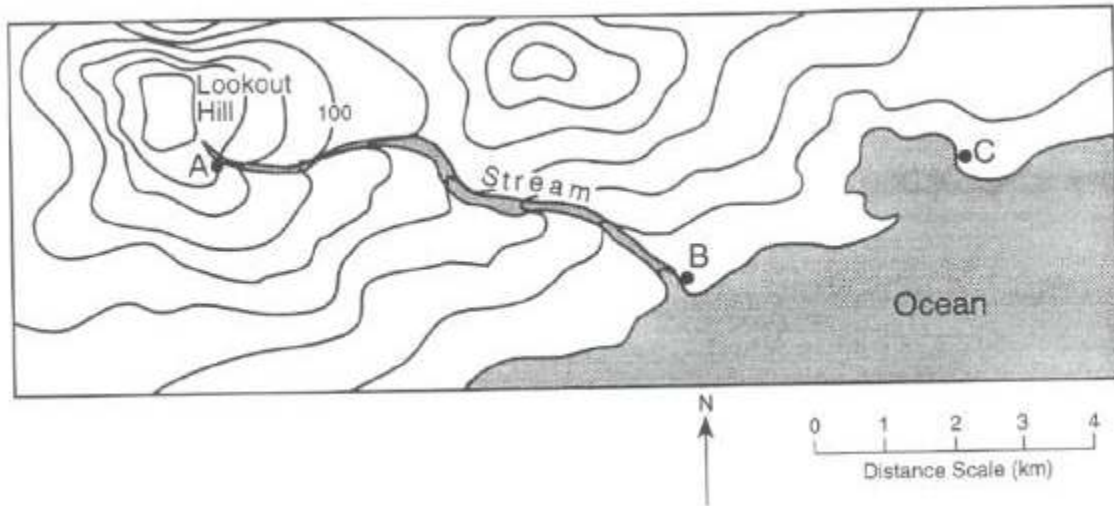


Topographic Map Worksheet

The topographic map below represents a location in North America. Points A through C are locations on the map. Elevations are in meters.



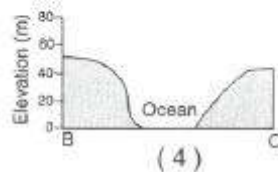
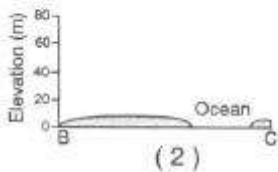
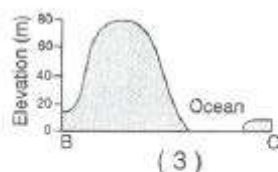
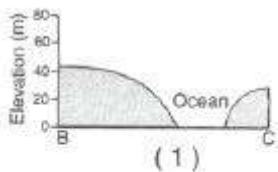
1. The elevation at Point A is
 A 60 m C 140 m
 B 100 m D 300 m

2. In which direction is the stream flowing?
 A northwest C southwest
 B northeast D southeast

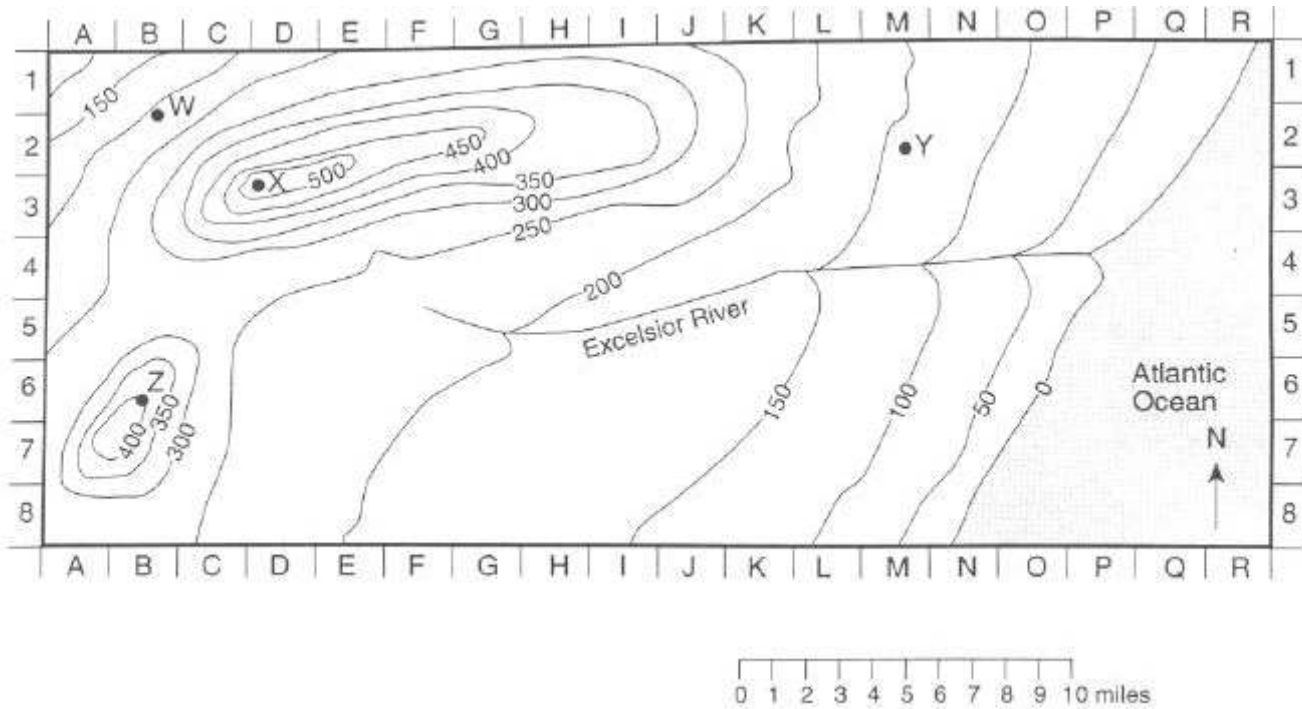
3. What is the approximate length of the stream between point A and point B?
 A 5 km C 9 km
 B 7 km D 10 km

4. Which side of Lookout Hill has the steepest slope?
 A north C east
 B south D west

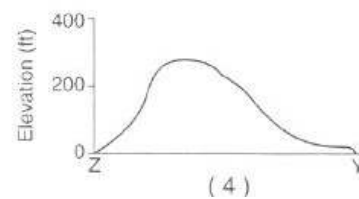
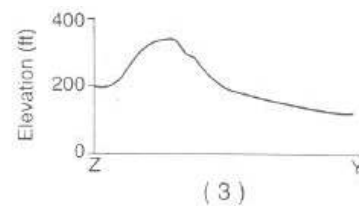
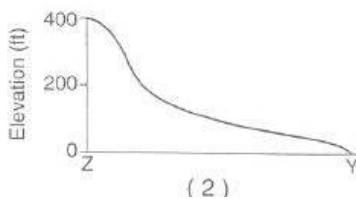
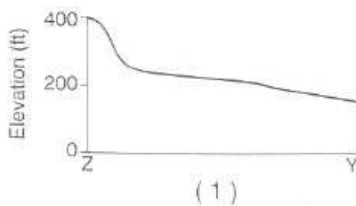
5. Which diagram best represents the profile between point B and point C?



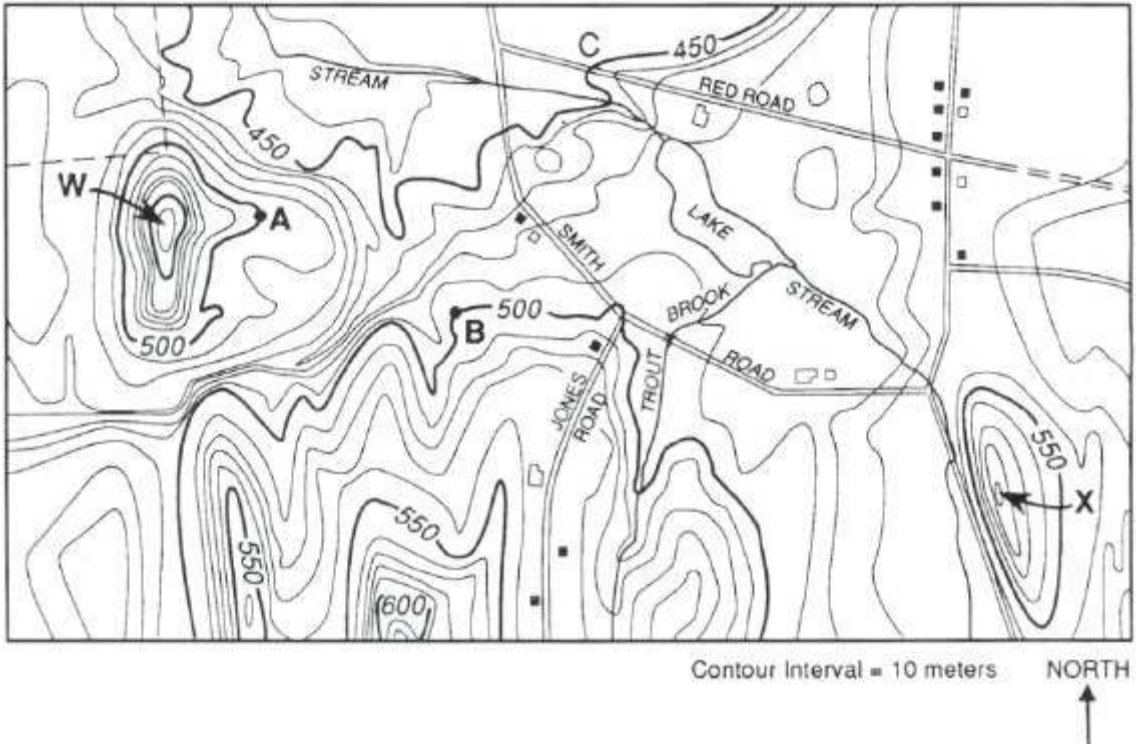
The topographic map below represents a location in North America. A grid system of letters and numbers along the edges of the map is provided to assist in finding locations. Elevations are expressed in feet.



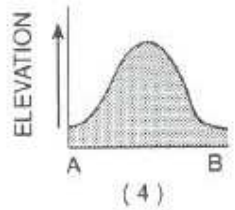
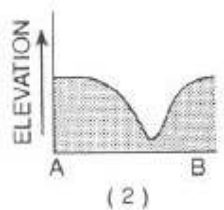
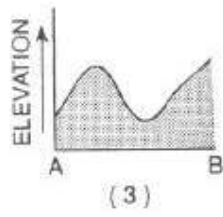
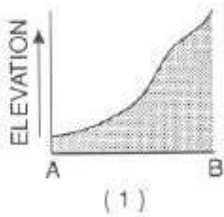
- What is the approximate elevation at grid location 7-I?
 - A 140 ft C 200 ft
 - B 170 ft D 230 ft
- What is a possible elevation at point X (grid location 3-D)?
 - A 488 ft C 558 ft
 - B 548 ft D 598 ft
- If a person at point W (grid location 2-B) travels uphill, in which direction is the person traveling?
 - A northwest C southwest
 - B northeast D southeast
- What is the elevation difference of the entire length of the Excelsior River?
 - A 0 ft C 225 ft
 - B 200 ft D 250 ft
- Which profile best represents the topography along a straight line from point Z (6-B) to point Y (2-M)?



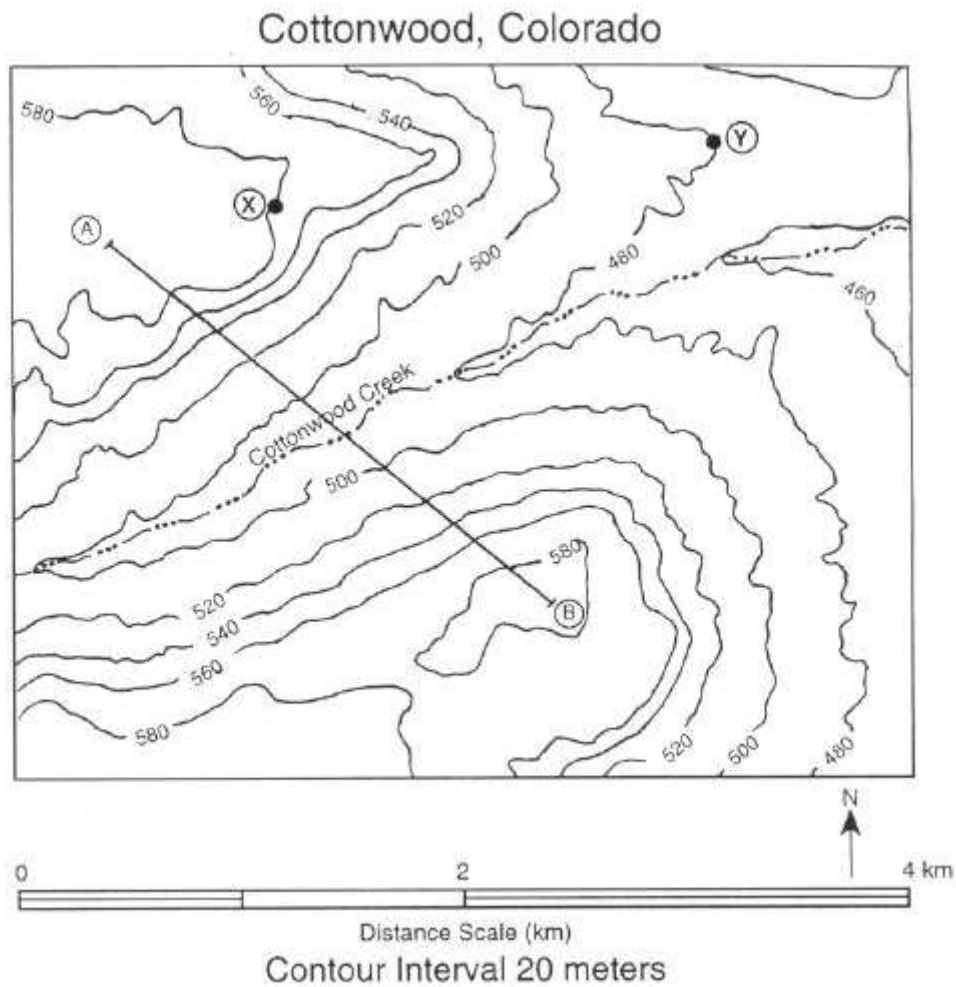
The topographic map below represents a location in North America.



1. What is the elevation at the intersection of Jones Road and Smith Road?
 A 450 m C 550 m
 B 500 m D 600 m
2. What is the elevation of the highest contour line on hill W?
 A 440 m C 560 m
 B 510 m D 610 m
3. On which side of hill X is the steepest slope found?
 A north C southeast
 B east D southwest
4. In which general direction is Trout brook flowing when it passes under Smith Road?
 A northeast C southeast
 B northwest D southwest
5. Which diagram best represents the profile along a straight line between points A and B?



The topographic map below represents an area near Cottonwood, Colorado. Points A, B, X, and Y are marked for reference.



1. State the general direction in which Cottonwood Creek is flowing.
2. State the highest possible elevation, to the nearest meter, for point B on the topographic map.
3. On the grid provided, draw a profile of the topography along line AB shown on the map.